

1. Install Ansys

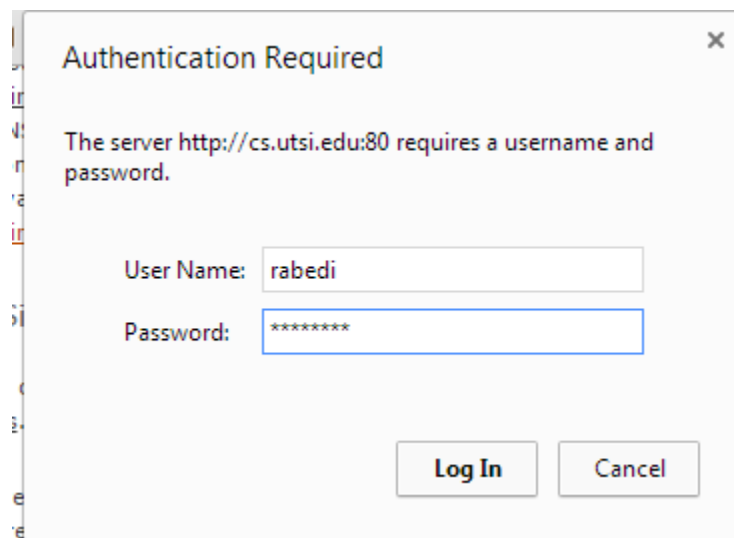
<http://cs.utsi.edu/links.aspx>

Choose Windows or Linux for Ansys 15.0

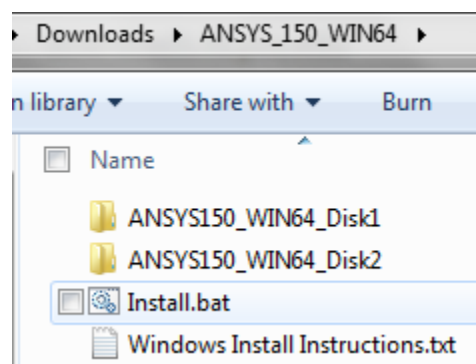
- ANSYS 15.0 - ANSYS Academic Research package allows users to create complex simulations and test real-world applications. 32-bit installers are available upon request.

[Windows](#) | [Linux](#)

Enter your password:



Unzip and run install.bat

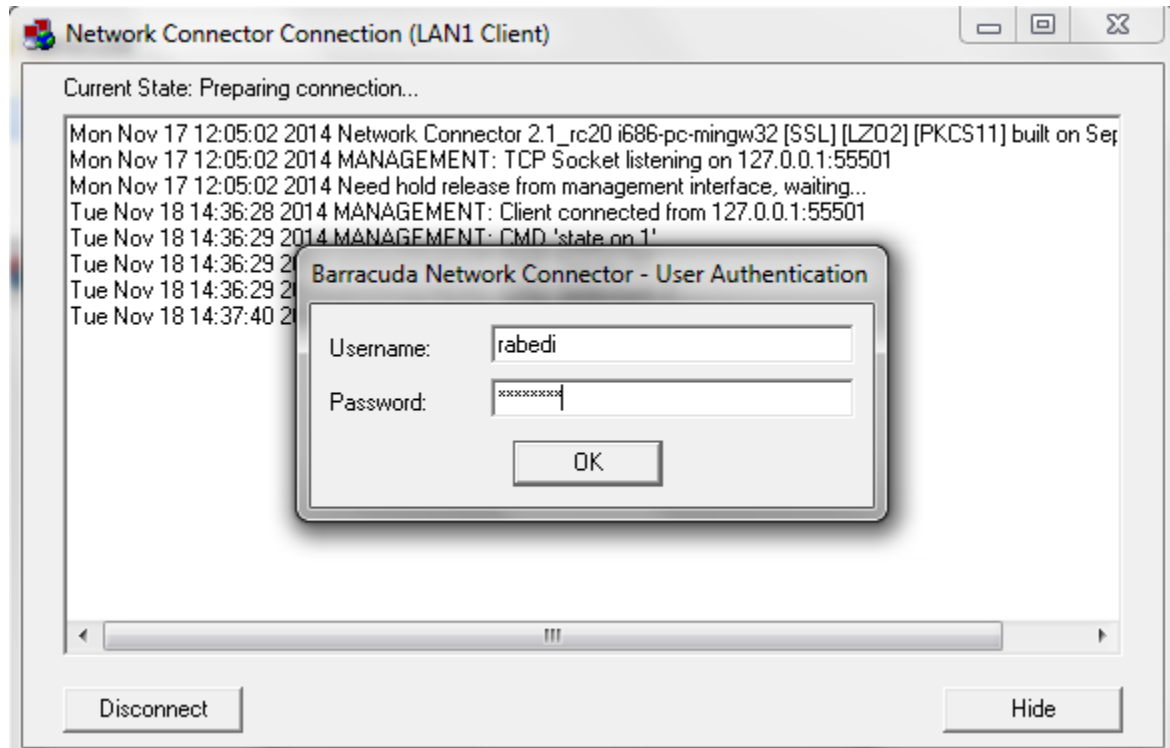
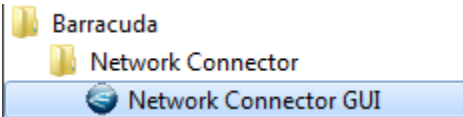


The batch file should automatically install all packages required.

2. Install VPN: Follow the instructions at:

http://rezaabedi.com/wp-content/uploads/CourseFractureME/UTSI_VPN_Instructions.pdf

3. Connect to UTSI using VPN



4. Run Ansys:

